

Cadillac



2015 SRX



# SRX







It has a look that appears effortless but doesn't ignore the effort. Lines are sculpted. Taillamps and headlamps displayed like fine jewels. Interior accents beautifully cut and sewn. A five-seat luxury crossover that suits you. Walks the walk. No matter where your plans take you, you're invited to just let go.



YOUR MOMENT TO SHINE  
HAS ARRIVED.







The integrated spoiler is purposefully designed to manage airflow, which not only helps maximize aerodynamic efficiency but also helps keep the rear glass clear of dirt and moisture.

Impressive in their looks and when it comes to looking out for you, the standard HID headlamps with Adaptive Forward Lighting help guide you around curves and corners at night.

Equally impressive available IntelliBeam technology automatically turns on high beams when needed and switches back to low beams when sensors detect another vehicle in front of your SRX.



LED accent lights are incorporated into fender-side vents to create a subtle glow and hint of intrigue.



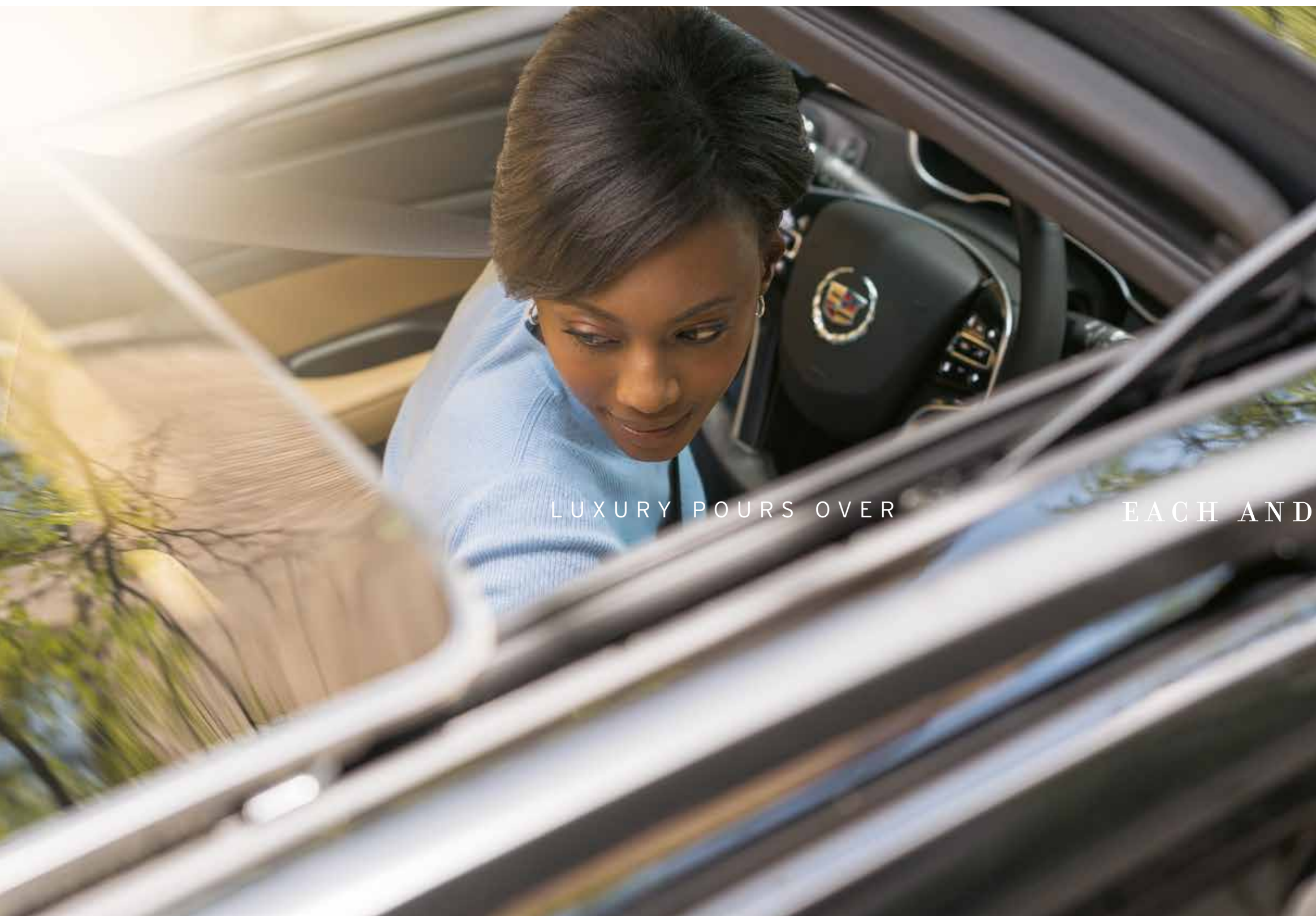
From understated elegance to standout performance, expression comes in many forms with a selection of available 20" wheels.



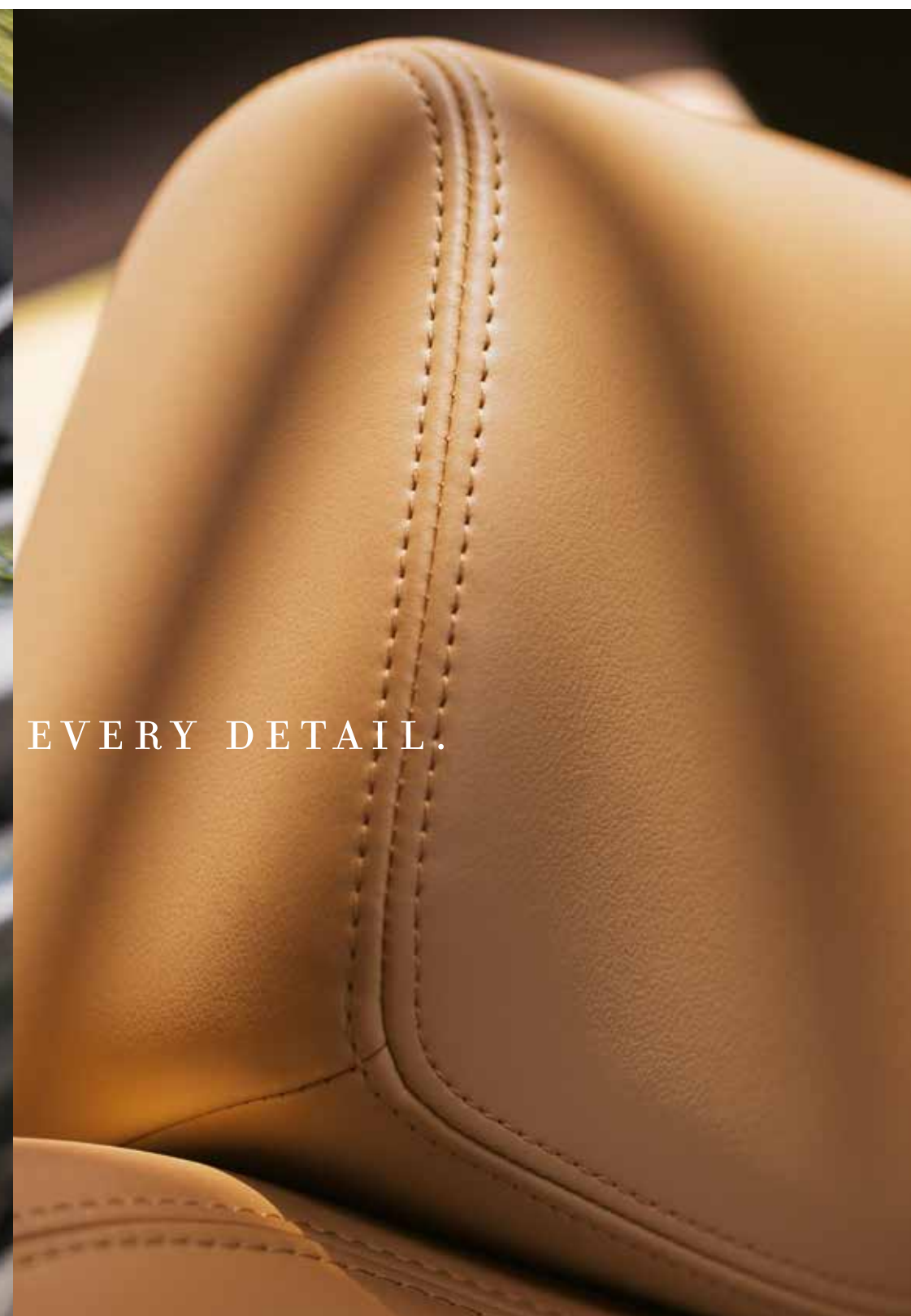








LUXURY POURS OVER



EACH AND EVERY DETAIL.





PLENTY OF ROOM  
WITH PLENTY OF VIEW.



The available **ULTRAVIEW SUNROOF** makes SRX feel even more spacious with its large glass area that spans both front and rear seats. When the sun gets more intense, a convenient **POWER SUNSHADE** blocks the light and helps keep things cool. As the roof opens and closes, ingenious technology takes over and automatically adjusts the Bose® Centerpoint® Surround Sound system to maintain the perfect volume. Once inside, your eye is drawn immediately to precise **CUT-AND-SEWN ACCENTS** and features like supple leather seating surfaces and the rich grain of exotic **SAPELE WOOD** trim. Standard **HEATED AND VENTILATED FRONT SEATS** provide soothing warmth and constant airflow throughout the leather seating surfaces to keep you feeling refreshed and relaxed. And because everyone has their own idea of the perfect temperature, the SRX offers standard **TRI-ZONE CLIMATE CONTROL**. Driver, front passenger and rear passengers can each adjust to their ideal setting. The **MEMORY PACKAGE** also keeps comfort top of mind. From the adjustable pedals to the positioning of the driver's seat and outside mirrors, everything falls into place with a single touch of a button. If it's a quiet spot you're looking for, acoustic windshield and front-side glass, triple-sealed doors and the use of **BOSE® AUDIOPILOT® ACTIVE NOISE CANCELLATION** have you covered. Bose technology actively monitors and measures undesirable cabin noise and sends a canceling frequency through the speakers to reduce powertrain sounds and create a serene interior.



EXPANDS THE BOUNDARIES OF  
YOUR OWN PERSONAL SPACE.



Getting into your SRX is a simple affair with **KEYLESS ENTRY**. It allows you to lock and unlock doors without ever having to remove the key fob from your pocket or purse. It also gives you quick access to the standard **POWER LIFTGATE** so you can load and unload packages with ease. Additionally, the Memory Height feature lets you program the height of the liftgate to avoid low garage ceilings or other overhead obstacles. SRX can seat five comfortably, or with the **60/40 SPLIT-FOLDING REAR SEAT**, you can fold down one or both rear seats to gain extra room for your belongings – more than 1600 litres of maximum cargo space. The **CARGO MANAGEMENT SYSTEM** makes intelligent use of space, with a U-Rail system integrated into the floor and an **ADJUSTABLE CARGO FENCE** that helps keep luggage and other valuables secure. It also comes with a retractable cargo shade, which easily covers the cargo area to keep your items out of sight. An **UNDERFLOOR STORAGE BIN** in the rear cargo area can also be used to conceal items or as a place to store the cargo fence, while hooks on the underside cover allow you to hang shopping or grocery bags. Large pockets behind the front seats and two levels of storage in the doors provide additional space. Add to that



a cooled glove box to help keep water bottles and other items appropriately chilled. **INTEGRATED ROOF RAILS** top off the rich appearance and, when paired with available cross rails, allow for additional cargo-carrying flexibility.







CONNECTIONS CAN BE  
A BEAUTIFUL THING.

**CADILLAC CUE**<sup>1</sup> makes advanced technology conversational. Its Natural Voice Recognition<sup>2</sup> lets you speak as you normally would and responds with a world of music, phone and entertainment offerings. A vibrant **8" DIAGONAL TOUCH SCREEN** functions much like a tablet, keeping all of the content within reach. Steering wheel-mounted controls also provide convenient access to CUE, the audio system, cruise control and many other features without taking your hands off the wheel. The standard **3-D GPS NAVIGATION SYSTEM** constantly updates maps on your CUE screen. The standard 10-speaker **BOSE CENTERPOINT® 2.0 SURROUND STAGE®** system, combined with DAB Radio ensure you're not just informed, but also entertained. Standard **REAR-SEAT DVD ENTERTAINMENT SYSTEM** features dual rear-facing, seat-mounted, flip-up 8" diagonal screens and Blu-ray™ playback. Dual-play capability allows rear passengers to watch a movie on one screen while playing a video game on the



other. Add in a remote control and two sets of wireless headphones, and your passengers are in for hours of enjoyment.

1. Full functionality requires compatible Bluetooth® and smartphone. Some devices require USB connectivity.  
2. Voice recognition is available in the following languages: English, French, German, Italian, Portuguese, Spanish and Russian.







# FIND COMFORT

## IN ALL THAT SURROUNDS YOU.

The SRX comes with a host of advanced technologies that work with you to further enhance your driving experience. One such feature is the innovative **SAFETY ALERT SEAT**, which sends pulses through the seat cushion to alert you to a variety of potential road hazards and the direction they're coming from. **INTELLIBEAM HEADLAMPS** automatically turn high beams on when needed and switch back to low beams when sensors detect another vehicle in front of you. **FORWARD COLLISION ALERT** uses a forward-facing front camera to detect and warn you when an impact may be imminent. **LANE DEPARTURE WARNING** monitors road lines and alerts you when your SRX begins to drift into another lane if the turn signal has not been activated. Additional features include **SIDE BLIND ZONE ALERT**, which warns you if a vehicle is in your blind spot before you merge or make a lane change. **REAR CROSS-TRAFFIC ALERT** uses sensors to sweep the rearward sides of SRX, giving you more time to react to approaching objects.



There's also a **REAR VISION CAMERA** that displays a live image of the area behind the vehicle to help guide you when you're backing up. When it comes to thinking ahead, SRX has you covered with available **ADAPTIVE CRUISE CONTROL**. It uses forward-looking radar and camera technology to naturally maintain a driver-selected following gap from the vehicle ahead, even in stop-and-go traffic, the **INTELLIGENT BRAKE ASSIST** system can detect vehicles in front or objects in the rear and, in certain situations, pre-fills the brakes to help reduce braking

time. Vehicle security is also a priority with the standard **THEFT-DETERRENT ALARM SYSTEM**, which features a vehicle inclination sensor, glass breakage sensor and interior motion sensor. It also includes a self-powered horn alarm with battery backup – which is activated when a potential intrusion is detected – and wheel locks to help keep your wheels safe and secure.





SAFETY BEGINS  
WITH A SOLID CORE.

Constructed with **ULTRA-HIGH-STRENGTH STEEL**, the SRX safety cage surrounds you with protection. Crumple zones are engineered and strategically positioned to help absorb and manage crash energy. If an impact situation does occur, **SIX STANDARD AIRBAGS**, including front- and second-row outboard head-curtain side-impact airbags, are designed to help reduce the risk of injury. Advanced technologies such as the StabiliTrak Electronic Stability Control System and rollover mitigation sensors work to prevent such events by helping you keep your SRX more firmly planted on the road.



Upon activating the wipers, the **AUTO-DRY BRAKES** go to work. They position the brake pads closer to the rotor to sweep away moisture and keep the brakes drier – to help provide optimal braking performance.





## SHARP LINES TAKE ON SHARP CURVES.

Effortless performance impeccably delivered. That's the **318 HP V6 ENGINE** in the SRX, so whether you're climbing a steep mountain pass or merging onto a busy highway, you'll appreciate and enjoy superior acceleration. Standard advanced **ALL-WHEEL DRIVE** works in tandem with the rear electronic Limited-Slip Differential (eLSD) to provide enhanced control while cornering. There's also the **AGILE RESPONSIVENESS** of Continuously Variable Real-time Damping suspension. It senses how the vehicle is reacting to the road and adjusts damping forces every two milliseconds. Combined with All-Wheel Drive, the result is a precise, confident and refined ride, whether it's raining or 24 degrees and sunny.









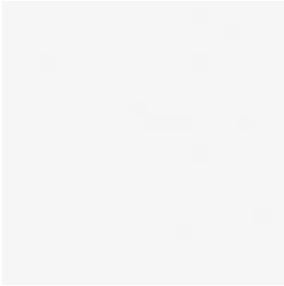
EXTERIOR COLOURS

TRICOAT | A meticulous 3-layer process that results in a dramatic hue-shifting color.

TINTCOAT | A premium 2-layer paint application with the addition of a tinted clearcoat, lending the finish an extra depth and brightness.



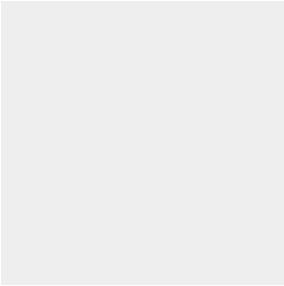
Graphite  
Metallic



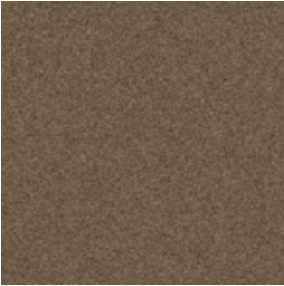
Platinum Ice  
Tricoat



Radiant Silver  
Metallic



Silver Coast  
Metallic



Terra Mocha  
Metallic



Crystal Red  
Tintcoat



Black  
Raven



Majestic Plum  
Metallic



Cocoa Bronze  
Metallic



Sapphire Blue  
Metallic



INTERIOR THEMES



SHALE Leather Seating Surfaces / Brownstone Dashboard Accents / Sapele Wood Trim



LIGHT TITANIUM Leather Seating Surfaces / Ebony Dashboard Accents / Raven Sapele Wood Trim



CARAMEL Leather Seating Surfaces / Ebony Dashboard Accents / Raven Sapele Wood Trim





BEAUTY COMES  
FULL CIRCLE.

Crafted to accentuate the beauty of SRX, all of the available wheels feature stunning designs and sophisticated styling.



20" ALUMINUM WITH BRIGHT MACHINED FINISH  
AND PREMIUM PAINTED ACCENTS  
Standard on SRX and includes P235/55R20 H-rated  
all-season tyres



20" ALUMINUM WITH  
PREMIUM PAINTED FINISH  
Available and includes P235/55R20  
H-rated all-season tyres



20" ALUMINUM WITH POLISHED FINISH  
Available and includes P235/55R20 H-rated all-season tyres

TECHNICAL SPECIFICATIONS



DIMENSIONS	FRONT	REAR
Headroom (mm)	1008	975
Hip room (mm)	1407	1389
Legroom (mm)	1046	922
Shoulder room (mm)	1481	1430

CAPACITY	
Cargo Volume (litres)	844
Seating	5
Fuel tank (litres)	79

ENGINE SPECS	SRX 3.6 V6 AWD
Engine Description	6 cylinder in v-form
Displacement	3564 cm <sup>3</sup>
Power Output	318 hp/234 kW @ 6800 rpm
Torque	360Nm @ 2400 rpm
Gears/Transmission	6-speed automatic, Driver Shift Control performance shifting and Sport Mode
Fuel	Petrol
Top Speed	220 km/h
Acceleration (0-100 km/h)	8.1 seconds
Towing Capacity (kg) (unbraked/braked)	750/2000
Curb Weight (kg)	2074
Maximum Allowable Weight (kg)	2520



# Cadillac

## PARTNER

Whether you are at home or on the road, our Cadillac Partner is there to offer you truly personal assistance. Count on us to arrange service appointments, answer questions about your new Cadillac and ensure you are always satisfied with your ownership experience. To find the Cadillac Partner closest to you, visit [cadillaceurope.com](http://cadillaceurope.com).



### WARRANTY

As a Cadillac owner, you expect nothing less than premium service and protection. Which is why your new Cadillac comes with a full 3-year or 100,000-km warranty (whichever comes first), plus a 6-year rust-through guarantee. All backed by an experienced Cadillac service team that will handle any issues with confidence and care. For more details, ask your Cadillac Partner.

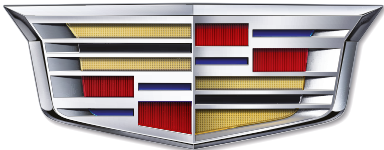
### CADILLAC SALES AND SERVICE SPECIALISTS

Whether you are at home or on the road, your Cadillac sales and service specialists are there to offer you truly personal assistance. Count on them to arrange service appointments, answer questions about your new Cadillac and ensure that you are always satisfied with your ownership experience. To find the Cadillac sales and service specialists closest to you, visit [cadillaceurope.com](http://cadillaceurope.com).



### CADILLAC ROADSIDE ASSISTANCE

In the event of an emergency, help is only a phone call away. Contact Cadillac Roadside Assistance, and we'll come to you as quickly as possible – 24 hours a day, 365 days a year. If we can't return you to the road straightaway, we'll take you to the nearest Cadillac Partner. Cadillac Roadside Assistance is yours free of charge for a period of 36 months from the date of registration. Ask your local Cadillac Partner for details.



Cadillac®

	CO <sub>2</sub> EMISSIONS (g/km) COMBINED	FUEL CONSUMPTION (l/100 km)			FUEL EFFICIENCY CATEGORY								
		URBAN	EXTRA-URBAN	COMBINED									
					BE	CH	DE	DK	ES	FR	LU	NL	UK
SRX 3.6 V6 AWD	252	15.1	8.2	10.8	G	G	F	G	D	G	G	G	L

Fuel consumption data and CO<sub>2</sub> emission data are determined according to Regulation (EC) No. 715/2007, taking into consideration the vehicle mass in running order, as specified by the regulation. Additional equipment may lead to slightly higher results than the stated fuel consumption and CO<sub>2</sub> figures. The figures for fuel consumption and CO<sub>2</sub> emissions do not relate to a specific vehicle and are not part of an offer. They are provided only for the purpose of comparison between different vehicle types. Average CO<sub>2</sub> emission of all new cars sold in Switzerland: 148g/km.

Kerb weight (kg) : The specified value accounts for a 90 per cent filled fuel tank as well as 68 kg for the driver and 7 kg for luggage. The kerb weight applies to vehicles with standard equipment. Optional equipment may increase this value. Rated power output: For petrol engines, Cadillac recommends using Super unleaded RON 95. Fuel qualities unleaded with RON 95 and above as well as a maximum ethanol volume of 10 per cent (E10) are permissible. Information on power and consumption relates to operation with RON 98 fuel.

PLEASE NOTE: The vehicles shown in this brochure are for illustration purposes only. European specifications may vary. Some illustrations feature special equipment that is not included in standard delivery. The information contained in this brochure was accurate at the time of going to press. We reserve the right to make changes in design and equipment. The colours printed in the brochure only approximate actual colours. Illustrated optional equipment is available at extra charge. Availability, technical features and equipment provided on our vehicles can vary from one market to another and may change without prior notice. Information on recycling design and End of Life Vehicles (ELV) can be found on [cadillaceurope.com](http://cadillaceurope.com). For precise information on the equipment provided on our vehicles, please contact your local Cadillac sales and service specialist. This material shall not be reprinted, in whole or in part, without the express written permission of General Motors.

© 2015 General Motors. All rights reserved. [cadillaceurope.com](http://cadillaceurope.com), Cadillac Europe, a department of Chevrolet Europe GmbH, a company registered under the Laws of Switzerland and having its registered office at Stelzenstrasse 4, 8152 Glattpark, Switzerland.





*Cadillac*<sup>®</sup>

[cadillaceurope.com](http://cadillaceurope.com)